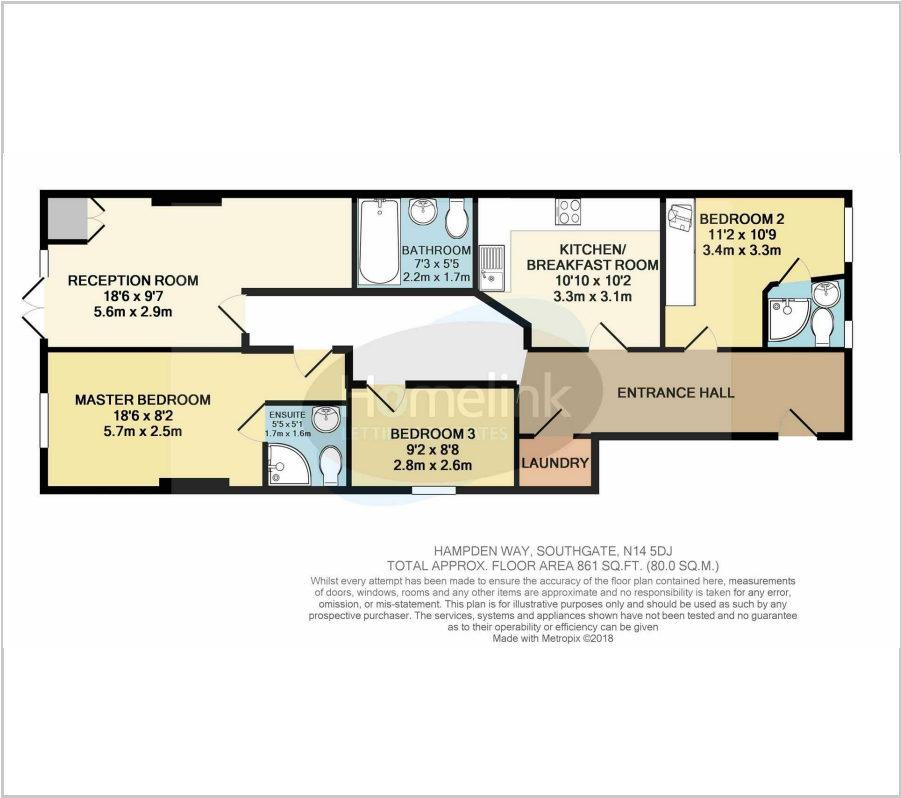




Hampden Way, Southgate, N14

£1,700 PCM

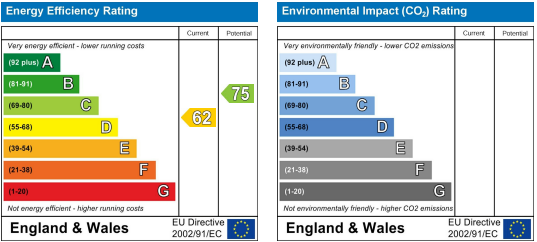
Floor Plan



Area Map



Energy Efficiency Graph



Viewing

Please contact our Homelink Lettings & Estates Office on 0208 882 2112 if you wish to arrange a viewing appointment for this property or require further information.

- Ground Floor Flat
- Modern Fully Fitted Kitchen
- Double Glazed
- Utility Area
- Garden/Patio
- Three Double Bedrooms
- Gas Central Heating
- Three Bathrooms
- Own Parking Space
- Available 1st Sept.

****Allocated Parking**** Homelink are pleased to offer for rent this modern ground floor three double bedroom flat set within the catchment of Ashmole Primary & Secondary Schools.

Benefits of the property include three bathrooms, separate lounge, patio area in the garden, secure parking at rear of the property, utility room, marble floors in the kitchen, granite worktops, integrated appliances including dishwasher, wooden flooring throughout, double glazing and is offered furnished.

There are a variety of local amenities and shopping facilities on Hamden Square as well as a regular bus links and good road links too. Ideal for a family due to location and size but also good for sharers.

To arrange a viewing, call and speak to one of our friendly lettings team on 020 8882 2112. Viewing highly recommended. Available from Sept.

Barnet Council Tax band C
Council tax amount = £1,552.26

****AGENTS NOTE:** Photos shown are before current tenants occupation.



These particulars, whilst believed to be accurate are set out as a general outline only for guidance and do not constitute any part of an offer or contract. Intending purchasers should not rely on them as statements of representation of fact, but must satisfy themselves by inspection or otherwise as to their accuracy. No person in this firm's employment has the authority to make or give any representation or warranty in respect of the property.

Homelink Lettings and Estates
62 Chase Side, London N14 5PA
0208 882 2112 [homelink.co.uk](https://www.homelink.co.uk)

